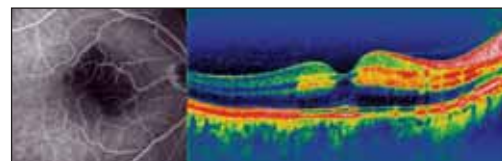


Spectralis HRA+OCT

PRICE	Please inquire
COMPANY	Heidelberg Engineering
PHONE	+760 598 3770
WEB	www.heidelberg-engineering.com
KEY FEATURES	
<ul style="list-style-type: none"> • Provides simultaneous images on the HRA and OCT • Image averaging system provides greater detail • 40,000 scans per second 	

Heidelberg Engineering has received Food and Drug Administration approval for the Spectralis HRA+OCT, the world's first commercial spectral domain optical coherence tomography (OCT) combined with the Heidelberg retina angiography platform (HRA), according to a company news release.



The Spectralis detects previously unrecognized structures, combining high-resolution cross-sectional images of the retina with any of four imaging modalities; autofluorescence, infrared, fluorescein angiography, or ICG angiography. This device scans the retina 100 times faster than time domain OCT. Spectralis HRA+OCT is a spectral domain system, sometimes called fourier domain, which scans the retina at 40,000 scans per second, to create highly detailed images of the structure of the retina. Because the OCT and HRA images are captured simultaneously, the clinician can be assured of the exact location of the area of interest and can correlate the outer visible retina structure with the internal structure.

The new product is built with the HRA platform, the first commercial angiography system to use lasers in combination with marker dyes. Using the HRA instead of white light photography allows clinicians to capture detailed images of the blood vessel structure within the retina.

Millennium Microsurgical Posterior System with AVE

PRICE	\$9,000 per AVE unit
COMPANY	Bausch & Lomb
PHONE	N/A
WEB	www.bausch.com
KEY FEATURES	
<ul style="list-style-type: none"> • Enhanced wound healing with entry-site alignment system • Improved visualization with second-generation light pipe • Vibration less surgical performance with high-speed vitrectomy cutter 	

The Microsurgical Posterior System combined with the Medical Instrument Development Laboratories Adaptable Vitrectomy Enhancer (AVE) will be capable of delivering 20- and 25-gauge high speed vitrectomy probes with enhanced aspiration performance and lightweight, ergonomic cutters, according to a company release.

The 20- and 25-gauge vitrectomy cutters deliver cut rates of up to 2500 cpm, which reduces vitreous tractional forces and the potential for retinal tears. This high-speed also reduces turbulence for enhanced control of mobile tissue. The 25-gauge probes more rigid shaft is designed to improve globe manipulation for access to the anterior margins.

The AVE box can be placed next to or on top of the Millennium system or in the compartment about the surgical tray in the Millennium console.

Novus 3000

PRICE	N/A
COMPANY	Lumenis (Santa Clara, CA)
PHONE	+408 764 3000
WEB	www.lumenis.com
KEY FEATURES	
<ul style="list-style-type: none"> • Full range of surgical hand pieces • Standard, illuminating and aspirating endo probes • Easy to use color touch screen 	

The Novus 3000 is a fully integrated system designed to be the complete laser solution. This ophthalmic laser comes with a diode-pumped solid-state laser that delivers 3000mW of 532-nm laser energy. A dual-fiber port is standard on each device, which are created to offer treatment versatility and optimize the therapeutic effect for today's most challenging retinal procedures.

With the Novus 3000, users can save and recall up to three memory settings per delivery device and/or three different surgeons. A remote control allows the user to change all treatment parameters via integrated color touch screen control. The foot switch is available in three options: Standard; Smart, which uses photoelectric eyes to move physician safety filter in and out; and Powerease, which allows the surgeon to adjust power up or down by tapping their foot.

The Novus 3000 is compatible with surgical microscopes, standard and coaxial LIOs, slit lamp biomicroscopes and endo probes.

Volk Suture Rings

PRICE	\$120
COMPANY	Volk Mentor, Ohio
PHONE	+ 1 440 942 6161
WEB	www.volk.com
KEY FEATURES	
<ul style="list-style-type: none"> • Designed for minimum turnaround between procedures • Premium grade titanium for durability • Biocompatibility minimizes adverse reactions 	

Volk Optical (Mentor, Ohio) has introduced a suture ring to secure surgical lenses to the eye during vitreoretinal procedures. The suture ring's unique design facilitates optimum suture placement with minimum turnaround between procedures, according to a company news release.

Volk's Suture Ring design features two tabs, precisely positioned to provide a convenient and stable location for suture placement according to standard suturing techniques. The ring's large radius increases functionality and safety during use.

The premium surgical implant grade titanium construction withstands the wear of repeated steam sterilization with an in-office autoclave for quick turnaround. This durable material also offers optimal biocompatibility, minimizing potential adverse patient reactions.

Volk Suture Rings are compatible with the company's Mini Quad, Mini Quad XL and Mini Quad ACS, Central Retinal and Central Retinal ACS, and Super Macula Indirect Lenses, as well as its line of Direct Image ACS surgical lens styles. ■

